

CUSTOM CONTENT

APRIL 24, 2017

M O S T I N F L U E N T I A L

Women Lawyers

I N L O S A N G E L E S



Los Angeles is truly a national leader when it comes to influential women in business – and the field of law is no exception. There are some particularly stellar attorneys in the LA region who happen to be women and we've alphabetically listed 50 of the best of them here, along with some basic information about their careers, practices and some relevant recent successes they've achieved.

Congratulations to the attorneys who made this list and thank you for working to keep the people and businesses of Los Angeles on the right track!

MOST INFLUENTIAL WOMEN LAWYERS

TAMANY V. BENTZ

Partner
Venable LLP



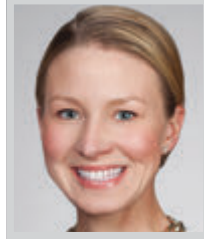
TAMANY Vinson Bentz is a partner with Venable. She is known for her work handling high profile trademark litigation as well as intellectual property matters

generally, including patent, trade secrets, and copyright litigation. Clients also rely on Bentz to provide critical brand protection counseling to protect their most valuable intellectual property and prevent or reduce the negative impact counterfeiting and IP theft can have on their business.

Bentz counsels clients on the cutting edge of the digital media industry, including companies that operate some of the most visited websites in the world. She also advises companies in the entertainment, fashion and consumer products industries. A frequent speaker, Bentz recently moderated a panel at the Digital Entertainment World Expo discussing how user-generated content presents unique rights-management challenges, and also a town hall at Sony Studios on data security. She is an editor of Digital Media Link, a newsletter covering trends and developments in the industry, and also sits on the board of the Association of Independent Commercial Producers (AICP) West.

NANCY A. BRUINGTON

Partner
Latham & Watkins LLP



NANCY Bruington has cemented her reputation as one of the leading finance attorneys in Hollywood, with over a decade of experience structuring and negotiating com-

plex motion picture, television and other entertainment industry financing transactions for a broad array of industry players. She also skillfully navigates complex inter-creditor and interparty arrangements among financial investors, producers, distributors and networks, completion bond companies, guilds and other stakeholders.

Bruington handles a wide range of entertainment industry financing transactions, including multi-picture or multi-series and slate financings, cash flow and asset-based financing transactions, corporate finance transactions, senior secured term loan and revolving credit facilities, mezzanine loan transactions, and the formation and capitalization of entertainment companies. Recent work includes advising long-time client MGM in 2016 in its new, five-year \$1 billion revolving credit facility arranged by J.P. Morgan with a syndicate of lenders. The arrangement replaced MGM's existing \$665 million revolving credit facility and lowers its borrowing rate to the London Interbank Offered Rate plus 2.25%, and augmented other terms within the agreement.

KIMBERLY BUFFINGTON

Partner
Pillsbury Winthrop Shaw Pittman LLP



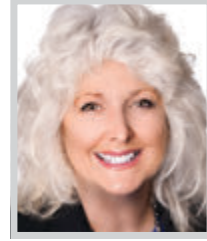
KIMBERLY Buffington, a Pillsbury partner and noted class action, trial and appellate lawyer, has a proven track record of securing multimillion-dollar awards for her clients. In

December 2016, she was named managing partner of Pillsbury's 85-lawyer Los Angeles office. She is also the co-hiring partner for the Los Angeles office and co-heads the Los Angeles Summer Associate Program.

Skilled in trials, appeals and arbitrations, Buffington has been successfully litigating consumer class actions and complex intellectual property, insurance coverage and commercial cases for 20+ years. Co-leader of Pillsbury's Internet and Social Media team, Buffington regularly represents technology companies, startups and other businesses in social media and copyright-related matters. She asserts and defends trademark, privacy rights and licensing disputes for recording artists, radio stations, and entertainment companies, and has recovered \$50+ million for insurance policyholders. She was the featured speaker at the 2016 Women in Law Empowerment Forum in Los Angeles on the topic, "Ambition: The Fuel for Your Career Engine (Why Talent Isn't Enough)."

MARY CRAIG CALKINS

Partner
Kilpatrick Townsend & Stockton LLP



NATIONALLY and internationally recognized, Mary Craig Calkins is a partner in Kilpatrick Townsend's Los Angeles office where she leads the fast-growing West

Coast Insurance Practice. Insurance is a critical part of virtually every significant piece of litigation, and Calkins has more than 30 years of high-profile insurance coverage experience representing policyholders in headline-grabbing directors and officers liability, entertainment and media, intellectual property, cybersecurity, and other significant coverage disputes.

Under Calkins' leadership, Kilpatrick Townsend's West Coast team has helped their clients recover hundreds of millions of dollars through the negotiation, litigation, trial, and arbitration of complex insurance coverage disputes. Her team is currently handling coverage disputes and issues implicating the laws of Brazil, Chad, Chile, Germany, Jordan, Malta, Syria, Turkey and the UK internationally, as well as matters in California, Colorado, Delaware, Georgia, Illinois, New York, North Carolina and Texas. She is handling major coverage litigation in North Carolina and negotiating matters in New York and Delaware involving more than \$250 million in insurance coverage.



We are very proud that our
Amy Solomon is among one of
2017's Most Influential Women Lawyers.

She's awesome!

Congratulations Amy

All of us at ...



1126 Wilshire Boulevard, Los Angeles, CA 90017

Phone: 213-262-6777 | Phone: 888-397-7655 | Fax: 213-481-1554

CONGRATULATIONS TO WSHB PARTNERS
CONSTANCE ENDELICATO & BRENDA RADMACHER
NAMED 2017 MOST INFLUENTIAL WOMEN LAWYERS



WSHB is proud to celebrate these two partners for their achievements and much deserved recognition as Los Angeles Business Journal's 2017 Most Influential Women Lawyers in Los Angeles. They are just two examples of why WSHB was recently named one of the top ten law firms in the nation for female lawyers by several national publications.

WSHB
WOOD • SMITH • HENNING • BERMAN
Legal Services Without Limits

877 974-2529

wshblaw.com

MOST INFLUENTIAL WOMEN LAWYERS

MICHELLE COOKE

Partner
Manatt, Phelps & Phillips, LLP



FOR over 20 years, Manatt's intellectual property co-chair Michelle Cooke has successfully been helping clients protect—as well as expand—their most important asset:

their intellectual property. Having cultivated a reputation for exceptional trademark work attuned to business interests, Cooke serves as a trusted partner to her clients. She works with publicly traded companies such as Universal Studios, General Mills and Alliance Healthcare Services in establishing, guarding and growing their brands. This includes providing global strategies to create and increase brand value and tackling cross-border trademark and copyright issues and disputes, and revising those strategies to reflect a client's evolving business needs. Cooke repeatedly is sought after for resolving complex multijurisdictional disputes and intellectual property challenges.

Cooke frequently advises on licensing, manufacturing, distribution, marketing, advertising and digital and social media content, as well as the enforcement and defense of intellectual property rights for a wide range of clients spanning well known and start-up brands in the entertainment, apparel and media/technology industries to manufacturers, as well as professional service providers.

ALEXIS CRUMP

Partner/Vice-Chair of Corporate Practice
Lewis Brisbois Bisgaard & Smith LLP



ALEXIS Crump is a partner in the Los Angeles office of Lewis Brisbois and vice-chair of the Corporate Practice. Crump has more than 20 years of experience

in municipal and corporate finance, real estate, redevelopment, EB-5 financing and mergers and acquisitions. She has acted as counsel to public entities, developers and private equity groups for the financing of various commercial, retail and residential real estate development projects throughout the United States.

Crump has assisted clients in the capacity of bond counsel, corporate counsel, developer's counsel and disclosure counsel. Crump has handled the issuance of tax allocation bonds, multi-family housing bonds, lease revenue bonds, tax anticipation notes, certificates of participation, private placements and private equity mezzanine financing ranging from \$5 million to over \$400 million. She has been legal counsel for over \$1 billion in finance transactions during her career. Crump has prepared literature for, and lectured in the areas of, non-profit corporation formation and real estate development.

KATESSA CHARLES DAVIS

Shareholder
Ogletree, Deakins, Nash, Smoak & Stewart, P.C.



KATESSA Charles Davis is a shareholder in the Los Angeles office of Ogletree, Deakins, Nash, Smoak & Stewart. She is responsible for all aspects of

employment litigation matters on behalf of employers and management, including trials and arbitrations. Davis has tried to verdict in state and federal court employment matters involving gender, race, and disability discrimination and harassment, as well as retaliation and wrongful termination. She also provides preventive counseling to clients.

Davis is a past President of the Los Angeles County Bar Foundation, a past Trustee of the Los Angeles County Bar Association, and a past President of the Black Women Lawyers Association of Los Angeles. She is a member of the Labor and Employment Law Sections of the State Bar of California and the Los Angeles County Bar Association. Davis also speaks on a multitude of employment and management related topics, including hiring and firing; leaves of absence; disability accommodation; personnel policies; discrimination laws; trade secrets; unfair business practices; and privacy in the workplace.

M. ELIZABETH DUBECK

Partner
O'Melveny & Myers LLP



A leader in O'Melveny's Project Development and Real Estate Practice, Liz Dubeck routinely handles the firm's high profile, groundbreaking project finance and

development deals, as well as public-private partnership transactions.

Last year was a particularly strong one for Dubeck, as she led the legal team handling the \$2.5 billion bond financing transaction in connection with LaGuardia Gateway Partners' (LGP's) leasing, redevelopment, financing, and long-term operation (through 2050) of the Central Terminal Building at New York LaGuardia Airport. She and the rest of the O'Melveny team advised LGP and its members, Meridiam Infrastructure North America Corporation, Skanska Infrastructure Development Inc., and Vantage Airport Group Ltd., on all aspects of its successful bid to be named the preferred proposer to enter into a public-private-partnership with The Port Authority of New York and New Jersey for the redevelopment project, and continued to serve as counsel to LGP during the exclusive negotiation period to finalize and finance the transaction. The \$4 billion redevelopment project represents the world's largest public-private partnership to date.



IS HONORED TO CONGRATULATE OUR PARTNERS

KARIN PAGNANELLI
AND
EMILY F. EVITT

ON BEING NAMED AMONG

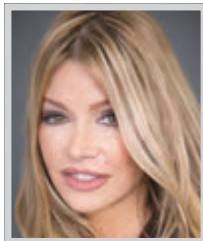
**THE LOS ANGELES BUSINESS JOURNAL'S
MOST INFLUENTIAL WOMEN LAWYERS**



MOST INFLUENTIAL WOMEN LAWYERS

CONSTANCE A. ENDELICATO

Partner
Wood, Smith, Henning & Berman LLP



CONSTANCE A. Endelicato is an accomplished trial lawyer with over 29 years of litigation experience in defending healthcare providers. To date, she has achieved an

incredible unmarred record of trying over sixty jury trials and binding arbitrations, having never been defeated. Endelicato's clients include physicians in all disciplines of medicine, hospitals, skilled nursing facilities, surgery centers, and allied healthcare professionals. Her cases range from catastrophic injuries, including birth injury, spinal cord injury, and brain injury, to elder and dependent abuse, wrongful death actions, and mass tort litigation.

As an undefeated trial lawyer, Endelicato is an active mentor for her WSHB partners and associates. She is an inspiration to women lawyers due to her commitment to excellence in trial advocacy, her passion for education, and devotion to mentoring young lawyers. This is demonstrated in her numerous accomplishments and contribution to educational programs and volunteer work.

BONNIE E. ESKENAZI

Partner
Greenberg Glusker LLP



BONNIE Eskenazi regularly handles groundbreaking matters and some of Hollywood's most high profile and landmark entertainment disputes. She represents plaintiffs

and defendants in a variety of litigation matters, primarily focusing on entertainment disputes over issues such as royalties and profit participation, copyright ownership, idea theft, contracts, defamation, invasion of privacy, merchandise and licensing, music distribution, and new technology.

Demonstrating the uniqueness of her practice, Eskenazi also handles various entertainment transactional matters, and serves as the outside general counsel for the Estate of Bob Marley, including having negotiated a ground-breaking cannabis branding deal for Marley Natural, and protecting the copyrights, trademark rights and publicity rights of the reggae icon. She is currently representing STX Entertainment in a legal dispute with Mexican film producer Fabrica de Cine over foreign distribution rights to Martin Scorsese's upcoming film *The Irishman*. The dispute involves Paramount Pictures and Netflix and has been covered closely in the Hollywood media. Eskenazi also teaches Entertainment Law at Stanford Law School and lectures at Harvard Law School.

SUSAN R. ESTRICH

Partner
Quinn Emanuel Urquhart & Sullivan LLP



SUSAN Estrich has been a partner at Quinn Emanuel for the past 9 years. She has been the Robert Kingsley Professor of Law and Political Science

at USC Law School for the past 27 years; prior to that, she was a tenured Professor of Law at Harvard Law School. She has served as a Founding Board member of the Victims Rights Law Center in Boston, served for ten years as a Board Member of Green Dot Public Schools, and for five years as a founding Board Member of Future is Now Schools, charter school organizations.

Estrich recently joined the newly formed Legal Advisory Committee for the Children's First Act, a 2018 ballot initiative to ensure every public school student in California a quality education. Estrich was the first woman President of the Harvard Law Review, the first woman to run a national Presidential campaign, and the youngest woman to be a tenured professor at Harvard Law School.

EMILY F. EVITT

Partner
Mitchell Silberberg & Knupp LLP



EMILY Evitt's work as an intellectual property litigator for the world's leading film and television studios, video game companies, and other content providers

is helping determine major questions relating to IP rights in the digital age. Evitt consistently demonstrates leadership outside of the courtroom, including in her work founding MSK's interdisciplinary startup practice, Start 'n Knupp. The Start 'n Knupp group provides clients with corporate, intellectual property, labor and employment, and immigration advice.

In *Blizzard Entertainment, Inc. v. Bossland GMBH*, Evitt acts as co-lead counsel to one of the world's leading video game developers as plaintiff in an action at the frontier of software and the law. The suit is an attempt to prevent defendant Bossland from creating the software bots it sells for use in popular multiplayer games, allowing players to automate gameplay and manipulate the games to their competitive advantage. Blizzard recently defeated Bossland's motion to dismiss for lack of personal jurisdiction, and the case is pending in the Central District of California.



inclusion. respect. unity.

Congratulations to Polsinelli's Mary McKelvey, honoree of the Los Angeles Business Journal's 2017 Most Influential Women Lawyers.

Strength in diversity.



polsinelli.com

The choice of a lawyer is an important decision and should not be based solely upon advertisements. Polsinelli PC. Polsinelli LLP in California.

MOST INFLUENTIAL WOMEN LAWYERS

AMBER FINCH

Partner
Reed Smith LLP



AMBER Finch is a partner in Reed Smith's Los Angeles office. A member of the firm's Insurance Recovery Group since joining in 2011, Finch has quickly become

a go-to lawyer for resolving disputes with insurance companies. With her commercial litigation and environmental background, she has recovered hundreds of millions of dollars in insurance proceeds for her commercial clients. She represents a litany of clients from start-up businesses to middle market and Fortune 500. She helps her clients negotiate better insurance coverage on the front end, tender and collect on insurance claims, and litigate insurance cases. Finch has been a force in the areas of general liability insurance, first party property insurance, environmental/pollution insurance, directors & officers insurance, errors & omissions insurance, mortgage insurance, product liability insurance, and media liability insurance.

For her pro bono work, Finch successfully petitioned the Ninth Circuit to vacate her legal permanent resident client's immigration removal order. In its published opinion, the Ninth Circuit granted the petition in its entirety and vacated the detention order.

AMY FORBES

Co-Partner LA Offices/Co-Chair Land Use & Dev.
Gibson, Dunn & Crutcher LLP



AMY Forbes is at the helm of some of the most exciting and high-profile land use deals in the Los Angeles area, including leading a team that played a critical role in

bringing the Rams back to Los Angeles by employing an incredible and improbable strategy to obtain the authorization to construct a multi-billion dollar NFL-ready stadium in under eight weeks. Her representation of the Hollywood Park Land Company in that effort bolstered her reputation as a leader in devising innovative ways to secure project approvals in record time, and with limited opportunities for legal challenge post-approval.

Forbes has spent her entire legal career at Gibson Dunn and is Co-Partner in Charge of the Los Angeles offices. Her practice is focused on land use planning issues, including zoning, CEQA and municipal law, especially the processing of entitlements through public hearings, community meetings and other administrative proceedings, the negotiation of agreements with government entities, and legal issues associated with project development and construction.

JEANNE A. FUGATE

Shareholder
Boies Schiller Flexner LLP



JEANNE A. Fugate has developed a rising profile in the L.A. legal community as a result of many significant litigation victories. But what makes Fugate an especially

influential lawyer is her work in the community at large. Among her many achievements is her implementation of a groundbreaking pipeline recruitment program at her firm. Fugate created a first-of-its-kind program, the firm's "Diversity Fellowship," which assists law students of diverse backgrounds to obtain federal judicial clerkships. The Diversity Fellowship provides law students of diverse backgrounds with an opportunity to observe and learn about the practice of law at the firm and helps students apply for a federal judicial clerkship. As part of the program, Fellows meet with federal and state judges and are guided in their judicial clerkship application.

Fugate's commitment to diversity and inclusion is not limited to her firm-based activities. She also serves in a leadership capacity in a California legal nonprofit organization, a voluntary bar association, and a politically appointed commission for the City of Los Angeles.

PATRICIA L. GLASER

Partner & Chair of the Litigation Dept.
Glaser Weil Fink Howard Avchen & Shapiro LLP



PATRICIA Glaser is the head of Glaser Weil's Litigation Department and tops the short list of trial attorneys in the nation sought after for high-stakes litigation. Respected

as a business trial lawyer, she also provides general legal counsel to publicly and privately held companies across a range of industries, including intellectual property, real estate, entertainment, banking and securities. Her clients include Fortune 500 companies, major studios, real estate investors and developers, financial institutions and high-profile entertainers and public figures.

She has long served one of the entertainment industry's preeminent trial lawyers – arguably the foremost female attorney for studios, production companies, creative executives and A-list celebrities that need to solve their issues through negotiation or litigation. Chambers and Partners has described her as "one of the most prominent litigators in the country" and "ferociously protective of her clients." She is unflinching and hard as nails but always conscientious." It is that passion and protectiveness that sets Glaser above and beyond her entertainment litigation peers.

Thompson Coburn
congratulates partners
Helen Kim and Jennifer Post
for their recognition among
the Most Influential Women
Attorneys in Los Angeles

Thompson Coburn is just one of 31 law firms nationwide to achieve a 2016 "Gold Standard Certification" from the Women in Law Empowerment Forum

Learn more about Thompson Coburn's total commitment to women attorneys at thompsoncoburn.com/women



Helen Kim,
Business Litigation

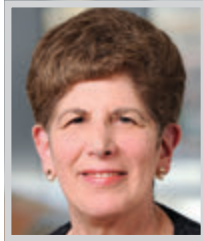


Jennifer Post,
Corporate Finance & Securities

MOST INFLUENTIAL WOMEN LAWYERS

TIMI A. HALLEM

Chair/Partner
Manatt, Phelps & Phillips, LLP



A trusted advisor in the areas of real estate and hospitality law, Timi Hallem has had great success over the course of her career representing major develop-

ers, lenders, owners and operators in all economic climates. She is a swift and successful problem-solver whose work on acquisitions, intricate loan restructuring and large-scale development make her the go-to counsel for clients whose legal needs change with the markets.

As head of the firm's national hospitality law practice and a partner in the firm's real estate practice, Hallem's experience covers all aspects of real property and hotel ownership and development, including acquisition, entitlement, development, financing, leasing and disposition. She has a depth of knowledge in all types of real estate projects, including hospitality, commercial, industrial, residential, public/private development and mixed-use. She also chairs the Manatt Women's Initiative, which combines firm-wide support networks, business coaching and other instructive programs, and innovative policies to help women at Manatt and its clients overcome the professional and personal challenges that often become barriers to success.

STACY W. HARRISON

Partner
Orrick, Herrington & Sutcliffe LLP



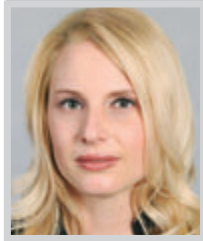
STACY W. Harrison is a partner at Orrick, Herrington & Sutcliffe LLP. She is an experienced trial lawyer who practices complex business litigation for clients in the

entertainment industries, with an emphasis on intellectual property, licensing, unfair competition, business torts, and breach of contract claims. She also represents financial institutions and property owners in real estate disputes.

Harrison counsels high-profile artists, producers and talent in accounting and profit-participation, licensing, and other disputes involving the television and motion picture industries. Recent representations in this area include Billy Bush in a dispute with NBC News regarding his employment with the "Today" show; and J.K. Rowling in connection with the "Harry Potter" series. Her work for clients in the commercial real estate, banking, and financial services industries focuses on partnership disputes and representing secured creditors in judicial and non-judicial foreclosure actions and bankruptcy proceedings. She has represented numerous real estate developers and property owners, including Ronald A. Simms and the Simms/Mann Institute for Education and Community Development in connection with various disputes.

PERLETTE MICHELE JURA

Partner/Co-Chair Transntl. Litigation
Gibson, Dunn & Crutcher LLP



PERLETTE Jura is an all-star litigator and community leader with significant experience in groundbreaking litigation. Over the past 12 years, she has helped develop

and launch Gibson Dunn's Transnational Litigation and Aerospace and Related Technologies groups, both of which she co-chairs. She also speaks globally about cutting-edge international and emerging legal issues and has played a pivotal role in several high-profile transnational matters for clients such as Nestlé, Intel, Toyota, Altria, Yahoo, Facebook, Dole and Chevron, with some of their most complex litigation. Recently, she represented Yahoo! in defeating a \$2.75 billion cross-border RICO suit and helped Nestlé USA secure dismissal of a decade-long transnational class action. She also co-chairs hiring for Gibson's Los Angeles offices.

In 2016, Perlette represented Gibson Dunn in the inaugural Women in Law Hackathon, a joint project launched by Diversity Lab and Stanford University. Her team won first place for their innovative solution to "hack" the problems facing women in law.

TRACEY A. KENNEDY

Partner
Sheppard, Mullin, Richter & Hampton LLP



TRACEY Kennedy is the go-to Los Angeles trial attorney in the Labor and Employment practice group who is routinely retained to try cases. She is in high demand

to try virtually any type of employment or business related case and has an impressive win record.

One example of her success occurred last April when she obtained a complete defense verdict on a \$122,000,000 PAGA claim for a wage and hour class action. There were three certified wage and hour classes, which sought damages for more than 29,000 former and current employees of Taco Bell. The classes sought in excess of \$25,000,000 for meal period and rest break violations and waiting time penalties. After a 3-week jury trial in federal court, the jury returned a verdict on one claim for \$495,000 and a defense verdict as to all other claims. After the jury trial, the sole prevailing class sought PAGA penalties of \$122,000,000. The judge found that there was no legal basis to award any PAGA penalties.

manatt



We salute you.

Manatt is proud to congratulate our partners

Michelle Cooke, Timi Hallem and Donna Wilson

on being named among the *Los Angeles Business Journal's* Most Influential Women Lawyers.

Manatt, Phelps & Phillips, LLP manatt.com

MOST INFLUENTIAL WOMEN LAWYERS

HELEN B. KIM

Partner
Thompson Coburn LLP



HELLEN Kim has had incredible success in her decades-long career. Among her notable achievements is her decade-long representation of Refco Inc.'s general

counsel during the broker's high-profile collapse. The many-layered litigation, which was prolonged for over 10 years, ended in July of last year when Kim prevailed against creditors who had appealed to the 2nd U.S. Circuit Court of Appeals.

As her time working on the Refco cases was coming to a close, Kim's successes with securities litigation powered on. She served as the lead attorney in defending a high-ranking executive of MF Global. She did so by obtaining the dismissal of her client from a class action arising from improper transfer of client monies which caused the brokerage firm to fall apart and eventually collapse in 2011. Kim also triumphed again this past May, when she served as the lead on a team that won a \$3.66 million jury verdict at trial for a minority shareholder of Nationwide Medical Inc.

YUKIKO KOJIMA

Partner
Nossaman LLP



YUKIKO Kojima's experience covers some of the largest, most innovative and significant P3 projects in California, the US and Canada. In 2016, she worked on two

of the most high profile P3 infrastructure projects in the US—the \$1.3 billion UC Merced 2020 Campus expansion project, which was recently named "Americas P3 Deal of the Year" by Project Finance International, and the \$500 million Denver International Airport Great Hall project — both of which will fundamentally reshape the cities and regions in which they are located.

Additionally, Kojima was a second chair of the Nossaman team that advised the Florida Department of Transportation ("FDOT") on the procurement of a concessionaire to implement the \$2.3 billion I-4 Ultimate Managed Lanes Project. The project is one of the largest greenfield availability payment PPP projects to close to date in the US, and was named "North American Transport Deal of the Year" by IJ Global and "Americas Transportation Deal of the Year" by Project Finance International.

IRENE LEE

Partner
Russ August & Kabat LLP



IRENE Lee is a partner at Russ August & Kabat, where she focuses her practice on all aspects of intellectual property, including patent, trademark, trade secret, copyright,

and IP licensing. She has been featured in WTR 1000 – The World's Leading Trademark Professionals and selected by peers and clients in Managing Intellectual Property's Top 500 IP Stars and Top 250 Women in IP.

Lee has extensive experience in trademark prosecution, litigation, and licensing with an emphasis on global brand expansion and management through strategic trademark and copyright protection and enforcement programs. In addition, as a registered patent attorney, Irene employs her patent prosecution experience in strategizing patent litigation and licensing issues. Lee represents clients in a wide range of industries, including integrated circuits, biotechnology, medical devices, computer software, video game system, housewares, baby products, food and beverages, and apparel.

MOLLY LENS

Partner
O'Melveny & Myers LLP



MOLLY M. Lens is a highly skilled and accomplished litigator specializing in complex civil litigation, contract disputes, intellectual property, copyright, and trademark matters,

business torts, class actions, arbitration, securities matters, and regulatory investigations related to the entertainment, media, and financial services industries.

Lens' clients include major motion picture studios, leading investment banks, and high-net-worth individuals, among others. She frequently advises clients on how to minimize litigation and exposure to risk related to potential transactions. Highlights of her work include representing Warner Bros. and New Line Cinema in copyright and contract action over merchandising, service, and theme park rights to The Lord of the Rings and The Hobbit; representing Citibank in litigation arising out of one of the largest foreign currency trading frauds; representing Fox in a trademark dispute to the breakout hit Empire; and representing two individuals in litigation over control to one of Southern California's largest outdoor advertising companies.

CONGRATULATIONS TO
KATESSA CHARLES DAVIS
ON BEING NAMED ONE OF THE
"MOST INFLUENTIAL WOMEN ATTORNEYS"

LABOR AND EMPLOYMENT LAW

For 40 years, Ogletree Deakins has built on the high standards of its founders and their dedication to exceptional client service. One of the largest labor and employment law firms representing management in all types of employment-related legal matters, Ogletree Deakins has more than 800 lawyers located in 52 offices across the United States and in Europe, Canada, and Mexico.

Register at www.ogletree.com/our-insights to receive updates on recent developments in labor and employment law.

**Ogletree
Deakins** 40 YEARS
Employers & Lawyers. Working Together



LOS ANGELES OFFICE
400 South Hope Street
Suite 1200
Los Angeles, CA 90071

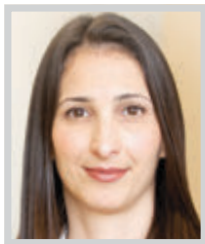
www.ogletree.com | 213.239.9800

EMPLOYERS AND LAWYERS,
WORKING TOGETHER.

MOST INFLUENTIAL WOMEN LAWYERS

SHARON BEN-SHAHAR MAYER

Principal
Bird, Marella, Boxer, Wolpert, Nessim,
Drooks, Lincenberg & Rhow, P.C.



SHARON Ben-Shahar Mayer's practice focuses on Complex Business Litigation and White Collar Defense. She represents clients nationwide in federal and state

courts, including in the California Court of Appeal and the Ninth Circuit Court of Appeal, as well as in numerous alternative dispute resolution forums. Her representations encompass major areas of complex civil litigation, ranging from intellectual property and legal malpractice to contract disputes, and cases involving multi-million dollar claims of fraud, breach of fiduciary duty, breach of contract, and allegations of securities and Medicare fraud.

Mayer has represented organizations and individuals, including corporate officers and directors, Fortune 500 companies, professional and other partnerships, technology companies and law firms. She has successfully handled complex trials and binding arbitrations, argued and won case dispositive motions and prevailed in both state and federal appeals. She is fluent in Hebrew and licensed to practice in Israel and California. She has successfully represented Israeli-owned companies as well as local subsidiaries and affiliates of Israeli business in various types of business disputes.

MARY T. MCKELVEY

Principal
Polsinelli LLP



MARY McKelvey is a principal of Polsinelli, an AmLaw 100 law firm with over 800 attorneys in 20 offices. She is a highly respected trial attorney who

is influential in every aspect of her career -- in litigating difficult cases for national and global clients, in handling high stakes pro bono cases, in successfully assuming leadership positions at the state and local bar levels, in supporting the next generation of women lawyers, in mentoring at-risk non-lawyer women, and in proactively volunteering in the community.

As a trial attorney, McKelvey handles high-risk, complex mass tort and products liability cases that are large and sometimes so complicated that they take many months and sometimes years to progress through litigation. Her clients are highly visible national and global manufacturing companies that are at risk for claims involving millions of dollars in claimed damages. In addition to trying cases, McKelvey has extensive experience in all stages of litigation and drafting complex pleadings and arguing dispositive motions in both state and federal court.

LISA HELFEND MEYER

Partner
Meyer Olson Lowy & Meyers LLP



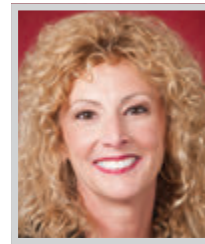
THE trailblazing founding partner of the female-owned family law firm, Meyer, Olson, Lowy & Meyers, LLP (MOLM), Lisa Helfend Meyer is a com-

manding force within the legal profession, a successful businesswoman, and a passionate advocate for the rights of children and parents. With grit, gumption, and a never-give-up attitude, she leads the largest family law firm in Los Angeles. Her clients include members of the entertainment and financial industries, business leaders, professional athletes, and their spouses.

In both her professional and personal life, children's issues are of profound interest to Meyer. Her experience raising an autistic child at a time when understanding of the disorder and resources for families were limited has made Meyer a tireless champion of special needs children and adults. Over the past year and a half, Meyer has had success in numerous high-profile cases ranging from international move-away child custody disputes and divorces involving clients from Iran, Israel and Taiwan to a complex property and support case involving a spouse with extensive private equity and venture capital holdings.

FELICIA R. MEYERS

Partner
Meyer Olson Lowy & Meyers LLP



FELICIA R. Meyers is a partner at Meyer, Olson, Lowy & Meyers, LLP (MOLM). Meyers' work with the firm focuses primarily on litigation, leveraging her extensive

experience as a civil litigator. In family law, Meyers found the ideal outlet for her formidable skills in the courtroom and for her interest in helping people protect their personal assets and custodial rights as they go through what is often the most difficult time in their lives. She has led successful legal efforts related to cutting-edge family law issues such as domestic and international move-away cases, custody disputes involving special needs children, domestic violence, and same-sex relationships.

Over the past year and a half she has been involved in diverse, complex trials in courtrooms across California. In a case presently on appeal that could have an impact on all high-income child support cases, she is representing the wife in a post-Judgment modification of child and spousal support in which the husband's income is largely equity compensation in the form of stock options.

GIBSON DUNN

congratulates its partners

Amy Forbes
Perlette Jura
Debra Wong Yang

and all the women attorneys named to the *Los Angeles Business Journal's*

2017 Most Influential Women Attorneys



Amy Forbes
Land Use and Development



Perlette Jura
Transnational and Commercial Litigation



Debra Wong Wang
White Collar Defense and Investigations

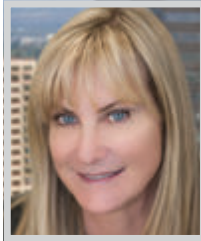
www.gibsondunn.com

- | | | | | |
|--------------|-----------|-------------|---------------|------------------|
| Beijing | Denver | Houston | New York | San Francisco |
| Brussels | Dubai | London | Orange County | São Paulo |
| Century City | Frankfurt | Los Angeles | Palo Alto | Singapore |
| Dallas | Hong Kong | Munich | Paris | Washington, D.C. |

MOST INFLUENTIAL WOMEN LAWYERS

MICHELE M. MULROONEY

Chair, West Coast Tax & Wealth Planning
Venable LLP



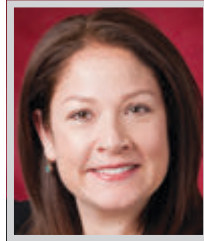
MICHELE Mulrooney is recognized as one of the top tax and wealth planning lawyers in the entertainment industry. She provides estate planning and family law counsel to some of the most recognized names in the industry, and her work includes sophisticated multi-million-dollar estate and dynasty matters. Mulrooney's astute insights into the distinctive legal needs of individuals in the entertainment industry have allowed her to develop a broader service offering than most estate planning attorneys. She is uniquely experienced to handle a wide range of matters, from a prenuptial agreement to the sale of a majority stake in a professional sports franchise, and international tax and estate issues. Her reputation as a trusted confidant and exceptional lawyer is based on her ability to balance the legal and personal complexities that exist at the intersection of family and corporate law for high-profile individuals.

Her ability to effectively navigate the particulars of family and estate issues is a testament to her reputation as a go-to lawyer for individuals in the entertainment industry.

Her ability to effectively navigate the particulars of family and estate issues is a testament to her reputation as a go-to lawyer for individuals in the entertainment industry.

DOREEN MARIE OLSON

Partner
Meyer Olson Lowy & Meyers LLP



DOREEN Marie Olson is a partner at Meyer, Olson, Lowy & Meyers, LLP (MOLM) and certified as a Specialist in Family Law by the Board of Legal

Specialization of the State of California, a distinction just .55 percent of the state's attorneys achieve. Working exclusively in family law for 20 years, Olson has helped establish MOLM as one of the nation's most respected firms working in the arena of high-asset and high-conflict family law matters.

Olson has extensive experience and expertise in all aspects of family law including complex marital dissolutions, spousal support, marital property division, business valuation, and parentage issues. A major focus of her work is in complex child custody cases. Olson has been instrumental in the growing number of domestic and international move-away cases that MOLM handles. While a seasoned litigator, Olson believes it is better to settle a case on a client's terms rather than having a judge decide the outcome.

KARIN PAGNANELLI

Partner
Mitchell Silberberg & Knupp LLP



As co-chair of Mitchell Silberberg and Knupp's entertainment & intellectual property litigation practice group and video gaming group, as well as a member of the

firm's governing board, Karin Pagnanelli has been a charismatic force shaping the legal landscape as one of the nation's top IP attorneys, and has successfully defended clients against copyright, patent, and trademark infringement allegations as well affirmatively protecting her clients' intellectual property rights, either through litigation, or a structured anti-piracy program. A seasoned litigator, Pagnanelli has a wide range of courtroom experience as she regularly practices in both state and federal court, as well to the Trademark Trial and Appeal Board.

Guitar Hero, Grand Theft Auto, and Call of Duty are three of the most popular video game franchises in history and Pagnanelli has won IP lawsuits involving each of them. Pagnanelli has received numerous accolades for her expansive knowledge in intellectual property law. She most recently received the "BTI Client Service All-Star" award from The BTI Consulting Group in 2017.

JILL PIETRINI

Partner
Sheppard, Mullin, Richter & Hampton LLP



JILL Pietrini is a sought-after expert source for the media, including major print publications and national broadcast outlets, and has testified as an expert witness

on trademark law in federal court. A staunch litigator, portfolio manager and trademark attorney, she would appear on any short list of the top intellectual property lawyers in California or elsewhere. The cutting-edge nature and impact of Pietrini's work crosses many industries for a diverse client roster in the entertainment, insurance, music, apparel, farming, promotion, and e-commerce industries.

Among her recent successful cases include having tried a celebrity persona claim under the Lanham Act for the Estate of Bob Marley in the U.S. District Court for the District of Nevada, based on the use of Bob Marley's image and song and album titles, but not his name, winning a jury verdict, monetary award, and permanent injunction. She also obtained a preliminary injunction enjoining the use of TWILIGHT for magazines relating to Summit Entertainment's successful Twilight motion pictures.

MORE THAN 20 YEARS EXPERIENCE HELPING EMPLOYERS AND EMPLOYEES RESOLVE THEIR WORKPLACE DISPUTES.

AREAS OF PRACTICE:

- Project Labor Agreement (PLA), Labor Compliance, and Workforce Development Consulting on Public and Private Sector Construction and Infrastructure Projects
- Alternative Dispute Resolution Services as a Mediator, Arbitrator, Ombudsman, Facilitator, or Neutral Hearing Officer for Litigation and Workplace Disputes
- Workplace & Title IX Sexual Assault Investigations/Advice & Counsel
- Anti-Discrimination, Sexual Harassment, Diversity, Ethics, and Other Compliance Training for Employers and Employees
- Expert Witness Services



Angela J. Reddock-Wright
Founding & Managing Attorney,
Mediator, Arbitrator



phone (213) 996-8474
fax (213) 402-8195

WWW.REDDOCKLAW.COM

e-mail - support@reddocklaw.com

MOST INFLUENTIAL WOMEN LAWYERS

ROBYN POLASHUK

Managing Partner, Los Angeles
Covington & Burling LLP



ROBYN Polashuk has established a unique practice that lies at the intersection of traditional and digital media -- an increasingly dynamic area for communications

and media lawyers. She has a vast range of experience counseling entertainment industry leaders, previously serving as Vice President of Distribution Legal Affairs at Lifetime Television, and as Senior Counsel for The Walt Disney company's New Technology Law Group. Since transitioning into private practice, Polashuk continues to be called upon by many of the world's leading content providers. She has counseled programmers such as the National Football League, Fox Networks Group, The Walt Disney Company, Univision Communications, PBS, and TV One.

Polashuk advises on highly-publicized distribution agreements and transactions across a spectrum of traditional and online video distribution platforms and business models, as well as media rights strategies, regulatory issues, due diligence in connection with corporate transactions, and support for media and copyright-related litigation. Her work encompasses some of the most precedential and lucrative deals in the television industry.

ZAZI POPE

Senior Vice President & Deputy General Counsel
Warner Brothers Entertainment, Inc.



As Senior Vice President and Deputy General Counsel for Warner Bros., Zazi Pope supervises a wide variety of lawsuits in the areas of copyright infringement,

right of publicity, first amendment, breach of contract, and other areas relating to the entertainment industry. Pope is also involved in regulatory and public policy issues, most notably those dealing with the marketing of Warner Bros.' films and television programs.

An example of recent high-profile matters Pope has managed include overseeing the team of in-house and outside counsel in a multi-year, and multi-faceted battle over the rights to Superman, following efforts by the heirs to Superman's creators to terminate their assignment of the copyright in the Superman character. Among her highest achievements, however, is Pope's advocacy and commitment to public service. Throughout her career, Pope has served several public interest organizations through fund-raising and advocacy work, including Public Counsel, United Friends of the Children, Bet Tzedek, ACLU, and Amnesty International. Currently, she serves on the boards of Big Sunday and Human Rights Watch.

JENNIFER POST

Partner
Thompson Coburn LLP



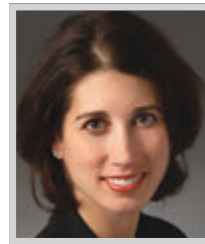
As a partner in Thompson & Coburn's Corporate and Securities practice, Jennifer Post serves as primary outside counsel to a variety of individuals, institutions and

companies, including entrepreneurs, startups and investors, as well as domestic and international public companies. Post represents companies and investors in a wide range of corporate transactions, among them mergers and acquisitions, capital raising transactions, secured lending, debt and equity restructuring, public and private securities offerings and intellectual property protection.

Though Post has not been with Thompson Coburn long, she has already seen many successes. For example, she led the charge in representing Irvine-based Decision Toolbox in its recent sale to Engage2Excel, a national human resources solutions company owned by \$2 billion private equity firm Gridiron Capital. Among other successes, she also helped to assist National Lampoon, Inc. achieve a significant milestone in its effort to restructure by obtaining relief under Delaware Corporations Code Section 205, known as the "fix it" statute.

BRENDA RADMACHER

Partner
Wood, Smith, Henning & Berman LLP



BRENDA Radmacher's 20 years of consistent excellent results, commitment to her clients, and impact on the legal, construction and insurance industries

was recognized this year when she was selected as the Outside Counsel Professional of the Year by the Claims & Litigation Management Alliance, the largest professional association in the insurance/risk management industry comprised of over 35,000 members. Radmacher is also one of 600 Certified Litigation Management Professionals in the United States. She previously served for six years as a court-appointed mediator for the Los Angeles County Superior Court, is a past member of the California Bar Association Committee on Alternative Dispute Resolution, and taught Alternative Dispute Resolution at the USC Law School for a decade.

Radmacher has been a partner at Wood Smith Henning & Berman, LLP for over 12 years and is a sought-after litigator and risk management counselor in the construction, real estate, and environmental/toxic-tort arenas. She has handled sensitive discrimination, harassment, and assault claims for her clients, including complex franchise/corporations issues.

LOS ANGELES BUSINESS JOURNAL

Get it as it Happens.

Local Business News from Your Local Business Source.



LABJ News & Reports @LABJnews
Events, Awards & Promotions @LABJevents

Influential Women



Influence is power

- ABU DHABI
- ATHENS
- BEIJING
- CENTURY CITY
- CHICAGO
- DUBAI
- FRANKFURT
- HONG KONG
- HOUSTON
- KAZAKHSTAN
- LONDON
- LOS ANGELES**
- MIAMI
- MUNICH
- NEW YORK
- PARIS
- PHILADELPHIA
- PITTSBURGH
- PRINCETON
- RICHMOND
- SAN FRANCISCO
- SHANGHAI
- SILICON VALLEY
- SINGAPORE
- TYSONS
- WASHINGTON, D.C.
- WILMINGTON

Congratulations to Amber Finch for being named to the Los Angeles Business Journal's 2017 Most Influential Women Lawyers.

Nationally recognized as among the best in the region at representing clients, our lawyers offer a depth of experience in key industries that mirror the diverse structure that composes the Southern California landscape.



Amber S. Finch
Partner, Los Angeles
+1 213 457 8046
afinch@reedsmith.com

Los Angeles
355 South Grand Avenue
Suite 2900
Los Angeles, CA 90071

reedsmith.com

ReedSmith

MOST INFLUENTIAL WOMEN LAWYERS

ANGELA REDDOCK-WRIGHT

Managing Partner, Los Angeles
Reddock Law Group



OFTEN called the “Workplace Guru,” Angela Reddock-Wright is a leading authority on workplace issues and the Founding and Managing Partner of the Reddock

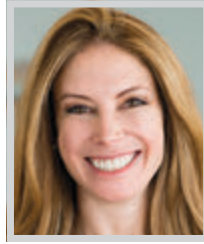
Law Group, a boutique employment and labor law firm based in Los Angeles.

A practicing Employment and Labor Law attorney and litigator for nearly 21 years, Reddock-Wright now focuses her time on working with employers and employees to resolve their disputes through the Alternative Dispute Resolution (ADR) Process, including mediation, arbitration, facilitation and other ADR services.

In addition, having handled some of the most noted college and university sorority hazing cases of the last 10+ years, Reddock-Wright has developed a niche in helping women and organizations resolve disputes relating to hazing and bullying claims. Reddock-Wright’s experience in this area, has led her to develop a specialty in conducting hazing and Title IX investigations for college and university campuses, along with other organizations. She also serves as a mediator, arbitrator, and expert witness in such matters.

STACI RIORDAN

Partner
Nixon Peabody LLP



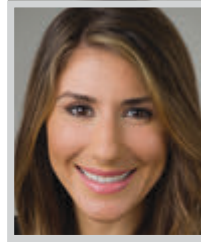
STACI Riordan works with designers, manufacturers, retailers and entertainers, providing strategic, business and legal advice so they can achieve their goals. A pioneer in

fashion law, Riordan handles both transactional and litigation matters for companies of all sizes—from startups to publically traded multi-national companies. She is a partner in Nixon Peabody’s Intellectual Property Counseling & Transactions practice and heads the firm’s Fashion Law team.

Riordan helps fashion brands adapt, innovate and stay ahead of their competition. She regularly counsels clients on the creation, use and exploitation of creative content while developing strategic growth plans aimed at brand cultivation. She understands the importance of building and sustaining a brand in the fashion industry and, as such, formulate business opportunities that enable my clients to define, manage and expand their brands via traditional media such as television, film and celebrity endorsement. She also works with entertainment clients to help envision, build and execute their goals. She regularly negotiates unscripted and scripted television, motion picture, writer, music and digital content agreements.

CORTNEY SHEGERIAN

Associate Attorney
Shegerian & Associates



CORTNEY Shegerian, an associate attorney with Los Angeles based Shegerian & Associates, has dedicated her career to protecting the rights of anyone who has

been wronged by an employer. At age 30, Shegerian is among the youngest attorneys to argue a case before the Supreme Court of California in the Court’s history. Her practice areas of expertise include discrimination, harassment, whistleblower retaliation and wrongful termination, among others. She has drafted and argued in court numerous substantive motions. She has also mediated more than 100 cases and has tried numerous cases on behalf of her clients in Federal Court.

Shegerian places special emphasis on actively listening to clients and giving them an understanding of the legal process. Her goal is to enable all the firm’s clients to have the understanding and tools they need to assist the firm in vindicating their rights. Among her achievements last year was playing a key role in an \$8,300,000 verdict for her clients, the family of a man who was killed in a fatal bus accident.

JULIE A. SHEPHERD

Partner
Jenner & Block LLP



A partner in Jenner & Block’s Content, Media & Entertainment Practice, Julie Shepherd has defended her clients’ rights in copyright and trademark infringe-

ment cases, trade secret misappropriation actions, unfair competition claims, anti-trust matters, shareholder derivative suits, class actions and profit participant cases. She develops strategies involving new technologies, advanced media, internet law and privacy, and guides teams through the complexities of these matters for the benefit of clients. Her victories in the past year include precedent-setting cases that have greatly impacted the legal, business and entertainment industries.

Shepherd recently co-lead a Jenner & Block team to a reversal of a trial court decision that would have allowed a company to stream broadcast television programming over the internet without permission from her client, Fox, and other copyright holders. Shepherd is on the frontlines of such cases throughout the country, having secured a series of key victories on behalf of clients against unauthorized services asserting novel legal theories to broadcast programming over the internet without the copyright holders’ permission.

Congratulations to Our Friend and Partner



Irene Y. Lee

On being named among the
2017 Most Influential Women Lawyers



raklaw.com

crowell moring



Congratulations **Gail Zirkelbach**

Recognized by the Los Angeles
Business Journal as a **Most Influential
Woman Attorney**

CROWELL.COM

MOST INFLUENTIAL WOMEN LAWYERS

NANCY SMITH

Partner
Nossaman LLP



OVER the past year, Nancy Smith—a co-founder of Nossaman’s Infrastructure Practice Group, and a member of the Firm’s Executive & Compensation

Committee—has served as public agency counsel on some of the largest, highest profile, and most innovative infrastructure and transportation projects in the nation. She has served as the lead or co-lead on several major transportation projects that reached significant milestones during the past year, including the \$5.6 billion Purple Line Light Rail System in the Maryland/DC Corridor—which reached financial close in June 2016; and the \$500 million plus Metro Gold Line Foothill Extension Project, which opened its 11.3 mile, six-station Azusa extension in the San Gabriel Valley in March 2016 and which is planning a further extension relying on sales tax funding passed in November 2016.

These and other projects of Smith’s will have a profound impact on transportation in a number of critical regions, including the Greater Los Angeles and Orange County regions.

AMY FISCH SOLOMON

Partner
Girardi | Keese



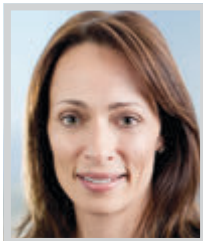
AMY Fisch Solomon, a partner with Girardi | Keese, specializes in the areas of professional liability, products liability and catastrophic injury. She is a Past President of

the Consumer Attorneys Association of Los Angeles (CAALA), the largest local plaintiffs bar association in the nation. She has successfully tried over 45 jury and bench trials in both State and Federal courts, and obtained numerous seven and eight figure verdicts and settlements on behalf of her clients. She is on the Board of Directors for the Inner City Law Center, the Western Justice Center and the Consumer Attorneys of California.

She sits on the Los Angeles County Bar Central Civil Bench/Bar Liaison Committee, the LACBA Presidents Advisory Committee on Women in The Legal Profession and the LACBA Complex Court Committee. Solomon is a Commissioner for the California State Bar serving on the Judicial Evaluation Nominee Committee. In her spare time, she mentors both Inner-City High School Students, as well as Law Students, to encourage their participation in the Civil Justice System.

SABRINA STRONG

Partner/Co-Chair of Consumer Class Actions
O’Melveny & Myers LLP



As Co-Chair of O’Melveny’s Consumer Class Action Practice, Sabrina Strong handles complex business litigation, focusing on class actions and mass

tort actions involving medical devices and pharmaceutical products, consumer goods, and a variety of financial services products. She has tried multiple high-profile cases to verdict. Capitalizing on her unique combination of high-profile trial experience and sophisticated appellate work, Strong is regularly called upon to actively litigate cases as appellate counsel throughout trial for high-exposure matters across a wide variety of industries.

Throughout her career, Strong has handled a variety of class actions for clients including Clorox, Johnson & Johnson, and General Mills. For General Mills, Strong achieved an outright dismissal of a class complaint. Her work for Clorox spanned an eight-year period, as she handled a series of related consumer class action complaints in federal and state courts. After aggressively litigating the matter for years, the parties reached a favorable global settlement, which was ultimately affirmed by the 9th Circuit.

SUSAN KOEHLER SULLIVAN

Partner
Sedgwick LLP



FOR more than 25 years, Susan Sullivan has delivered exceptional legal service and results to clients primarily in the insurance industry. Sullivan employs a

360-degree approach to every matter, where fully analyzing factual and legal issues is just the beginning. She evaluates and considers each party’s interests and motivations to determine the best strategy going forward, and enjoys working closely with her clients to achieve their goals.

Sullivan is a Board member on Sedgwick LLP’s Women’s Forum, which places a strong emphasis on women advancing in the legal field. Sedgwick’s Women’s Forum includes a Board of Directors that includes a diverse group of women from outside the firm. Sullivan is actively involved in other external organizations that focus on retaining and advancing female attorneys. Sullivan started 2017 by winning four summary judgment motions in four different lawsuits in a two-month period (with the assistance of her female team, which includes associate Patricia Daza-Luu and counsel Beth Yoffie).

LATHAM & WATKINS LLP



LW.com

Congratulations to all of the *Most Influential Women Attorneys* honorees, including our partner

Nancy Bruington

BSF

BOIES SCHILLER FLEXNER

*We congratulate
Jeanne Fugate,
Zazi Pope, and all of
the Most Influential
Women Lawyers.*

BOIES SCHILLER FLEXNER LLP

725 South Figueroa Street
Los Angeles
401 Wilshire Avenue
Santa Monica
www.bsflp.com

MOST INFLUENTIAL WOMEN LAWYERS

POLLY TOWILL

Partner
Sheppard, Mullin, Richter & Hampton LLP



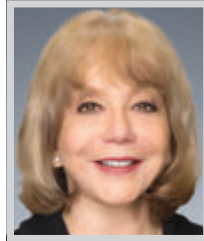
POLLY Towill's high quality legal counsel, devotion to her clients and her consistently exceptional results make her the "go-to" litigator for clients. As stated by the

Chief Legal Officer of BofI Federal Bank, a publicly traded company and one of the fastest growing banks in the nation, "The results that Polly achieved for us in these 'bet the farm' lawsuits were nothing short of spectacular."

In one recent case, *Waterfield Financial Services, Inc. vs. BofI Holding, Inc.*; Towill achieved complete victory for BofI Holding, Inc. and BofI Federal Bank in state court action filed against it seeking over \$400 million in damages for alleged breaches of acquisition, technology and consulting contracts; fraud; violations of banking regulations, securities, and labor laws. After three years of protracted litigation, Towill obtained dismissal of all causes of action and her client made no monetary payment and no modifications of business practices was required.

JANE SHAY WALD

Partner
Irell & Manella LLP



JANE Shay Wald is a partner emeritus of Irell & Manella LLP and chair of the firm's trademark practice group. A trademark powerhouse and scholar, her practice also

extends to unfair competition, false advertising and copyright. Wald counsels clients on a wide range of IP issues related to the acquisition and maintenance of U.S. and foreign rights and potential infringement problems. She also prosecutes trademark applications in the U.S. Patent and Trademark Office. In addition, Wald litigates before the Trademark Trial and Appeal Board and the federal courts.

Wald was counsel on the briefs for *Dastar Corp.*, the prevailing party in the U.S. Supreme Court Lanham Act case, *Dastar Corp. v. Twentieth Century Fox Film Corp.*, 539 U.S. 23 (2003). More recently, in a matter recognized as the number one trademark ruling of 2016 by a national legal publication, Wald was part of a team that helped deliver a major victory to shoe manufacturer Skechers in a trademark infringement lawsuit in the U.S. International Trade Commission brought by Converse.

DONNA L. WILSON

Partner
Manatt, Phelps & Phillips, LLP



LAST year, as privacy, data security and other consumer issues were exploding, Donna Wilson—a formidable attorney, newly elected member of

Manatt's Board of Directors and co-chair of Manatt's Privacy & Data Security and Financial Services Litigation groups—was lead counsel on major matters, making news helping companies in the emerging area of data security and cyber governance, including responding to data breaches and data incidents. The financial services arm of Wilson's practice was also roaring in 2016 as she fiercely and successfully represented a mortgage loan servicing provider in a matter that received national attention.

A go-to litigator, Wilson understands the delicate balance of protecting a company's most valuable information in the midst of litigation. She is a sought-after counselor for companies in crisis situations and also helps companies manage risk proactively. She has established a successful record bringing and defending complex and high profile cases for clients in highly regulated industries where heightened connectivity has changed the way we view privacy and the applicable laws.

DEBRA WONG YANG

Partner/Chair of the Crisis Mgmt. Practice Group
Gibson, Dunn & Crutcher LLP



FEW if any, can rival Debra Wong Yang's distinguished background – she is the first Asian-American woman to serve as a U.S. Attorney, former

California state judge, and now serves as Chair of Gibson Dunn's firm-wide Crisis Management Practice Group. She has been recognized as a leading practitioner by Chambers and Partners, who named her the top White-Collar Crime Individual Litigator in the nation last year.

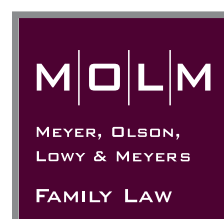
Given her record of success, Yang focuses part of her practice on strategic counseling. She leads critical representations, both high profile and highly confidential, involving a wide variety of industries, economic sectors, regulatory bodies, law enforcement agencies, global jurisdictions and all types of proceedings. Her clients are in the private and public sectors. She guides teams of attorneys and outside consultants in the development and implementation of strategies to achieve the most favorable outcomes. She has a strong background in addressing and resolving problems across the white-collar litigation spectrum, including through corporate and individual representations, internal investigations, crisis management and compliance.

CONGRATULATIONS TO

Lisa Helfend Meyer, Doreen Olson and Felicia Meyers

for being recognized among

Los Angeles Business Journal's 2017 Most Influential Women Lawyers



SPECIALIZING IN HIGH-ASSET DIVORCE AND COMPLEX CUSTODY MATTERS

MOLFAMLAW.COM

10100 Santa Monica Blvd. Suite 1425 | Los Angeles, CA 90067 | 310.277.9747
2211 Michelson Dr. Suite 340 | Irvine, CA 92612 | 949.397.3977

MOST INFLUENTIAL WOMEN LAWYERS

GAIL ZIRKELBACH

Partner
Crowell & Moring LLP



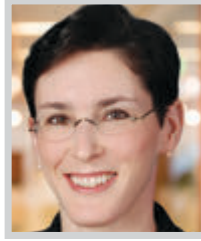
GAIL Zirkelbach, a Crowell & Moring partner based in Los Angeles, provides West Coast leadership for the firm's nationally acclaimed Government

Contracts Group. She has a notable record of achievement in litigating and investigating highly sensitive government contracts matters, particularly those pertaining to False Claims Act (FCA). In doing so, she has established herself as a thought leader within the legal profession on FCA issues. She focuses on internal investigations, defense of fraud actions, and counseling aerospace and technology companies and operators of Department of Energy laboratories, in all government contracts and compliance issues at the federal, state, and local levels.

Whether navigating a government probe or ensuring corporate compliance with government regulations, Zirkelbach has provided effective counsel to her clients gained from more than 30 years of experience. When the fate of businesses or a severe threat of reputational harm is at stake, Zirkelbach is called in by large defense companies to conduct internal investigations and to assist with the development and implementation of compliance programs.

LAURA A. ZWICKER

Partner & Chair Private Client Svc. Grp.
Greenberg Glusker LLP



FOR over a quarter of a century, Laura Zwicker has focused her legal career on both the tax and personal aspects of succession planning. Given her

depth and range of experience, Zwicker looks at issues in addition to technical tax issues, to develop strategies for her clients by listening to what is most important to them, which often goes against traditional paradigms. Her clients, among whom are Hollywood's A-List celebrities, producers and directors as well as founders of successful technology companies, leading real estate investors, multinational families and foreign governments, consider her an integral part of their long-term succession and wealth transition planning.

For example, Zwicker recently assisted an A-list Hollywood actor to craft a trust and charitable giving structure that allows for the control and exploitation of the client's name and likeness, as well as the client's other intellectual property, in a manner consistent with the client's wishes in a tax efficient manner following death.

Justice Vaino H. Spencer Honored by the BWL

IN December of last year, the Black Women Lawyers Association of Los Angeles, Inc. (BWL) held a loving Memorial Tribute service to honor the legacy and leadership of BWL Co-Founder Justice Vaino Hassan Spencer, who passed away on October 25, 2016, at the age of 96.

Justice Spencer was a legal giant. She was the first African American woman judge in California when she was appointed to the Los Angeles Municipal Court in 1961, and only the third Black woman judge in the nation. In 1976, she was elevated to the Los Angeles Superior Court and, in 1980, to the California Court of Appeal, Second Appellate District. Justice Spencer served on the Court of Appeal for over 26 years, where she served as the Presiding Justice of Division One until her retirement in 2007. Serving on the bench for 46 years, Justice Spencer is one of the longest serving judicial officers in California.

Justice Spencer was a trailblazer for women and people of color in the legal profession, advocating tirelessly for gender and racial equality in the bar and on the bench. Exemplifying these efforts, in 1975 she co-founded Black Women Lawyers Association of Los Angeles, Inc. with then Congresswoman Yvonne Burke, and in 1979, the National Association of Women Judges, with Presiding Justice Joan Dempsey Klein. With Justice Klein, she expanded the scope of her advocacy to the international stage, co-founding the International Association of

Women Judges, which led to training and promotion of women judges worldwide.

The Memorial Tribute was held at Justice Spencer's alma mater, Southwestern Law School, where Justice Spencer's family, friends, colleagues, bar leaders, attorneys and court staff remembered her life and legacy.

The power-packed audience included former Los Angeles County Supervisor Yvonne B. Burke and former California Attorney General John Van de Camp.

The hour-long tribute was filled with special remembrances of Justice Spencer and the impact she had on the personal and professional lives of members of the community and the legal profession.

At the conclusion of the tribute, Judge Marguerite Downing announced the creation of the Hon. Vaino Hassan Spencer '52 Judicial Externship Endowment Fund, which has been established to honor Justice Spencer's legacy at Southwestern Law School to fund a judicial externship for a deserving law student. Several donations to the endowment were received that day. Additional donations will be accepted by Southwestern Law School on an ongoing basis. A hosted champagne jazz reception immediately followed.

To learn more about BWL, visit www.blackwomenlawyersla.org. Also, find them on Facebook under "BlackWomenLawyersLA" and follow them on Twitter @BWLOfLA.

LOS ANGELES BUSINESS JOURNAL

WOMEN'S SUMMIT

The *Los Angeles Business Journal* is excited to host the region's most empowering Women's Summit. You will have the opportunity to be inspired by local women executives sharing their expertise in wealth, wellness and wisdom. Join us in recognizing the most dynamic female executives and entrepreneurs. To nominate or purchase tickets, please visit www.labusinessjournal.com/bizevents.

Friday, June 23, 2017

JW Marriott at LA Live

900 West Olympic Boulevard, Los Angeles, CA 90015

Speaker Symposium: 7:00am – 11:00am

Awards Luncheon: 11:00am – 1:30pm

PLATINUM SPONSORS:



GOLD SPONSORS:

Pepperdine University School
of Education and Psychology

Torrey Pines Bank

Vistage Worldwide, Inc.